



IMI launches 5th Call for proposals

Dear Researcher

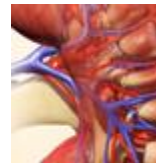
The Innovative Medicines Initiative (IMI) is Europe's largest public-private initiative aiming to speed up the development of better and safer medicines for patients.

Collaborate with PolyGene and get customized mouse models for diabetic kidney disease or Alzheimer's disease!

IMI supports collaborative research projects and builds networks of small and medium enterprises (SMEs) such as PolyGene and academic experts in order to boost pharmaceutical innovation in Europe. IMI is a joint undertaking between the European Union and the pharmaceutical industry association EFPIA.

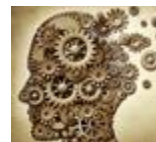
Topic 2 Diabetic kidney disease biomarkers (DKD-BM).

» PolyGene has the expertise and can contribute with respect to the generation of novel to-be-established animal models relevant to diabetic kidney disease (DKD).



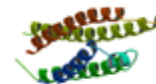
Topic 3 Inflammation and Alzheimer Disease.

» PolyGene's contribution can be the validation of tools to knock-down or over-express targeted genes and identify suitable reagents to quantify knock down or overexpression.



Topic 6 From APOE biology to Alzheimer's Disease targets.

» PolyGene can research into ApoE biology in models with high relevance to AD, e.g. iPSCs-derived models and animal models as well as the generation of novel transgenic models.



PolyGene, if you wouldn't know, is [reliability](#), [quality](#) and most of all, [dedication](#).

With our best wishes

Your PolyGene Team